

# BRUNTON

---

## RESIDENTIAL



**MANDEVILLA WAY, GREAT PARK, NE13**

**£1,200 Per Month**



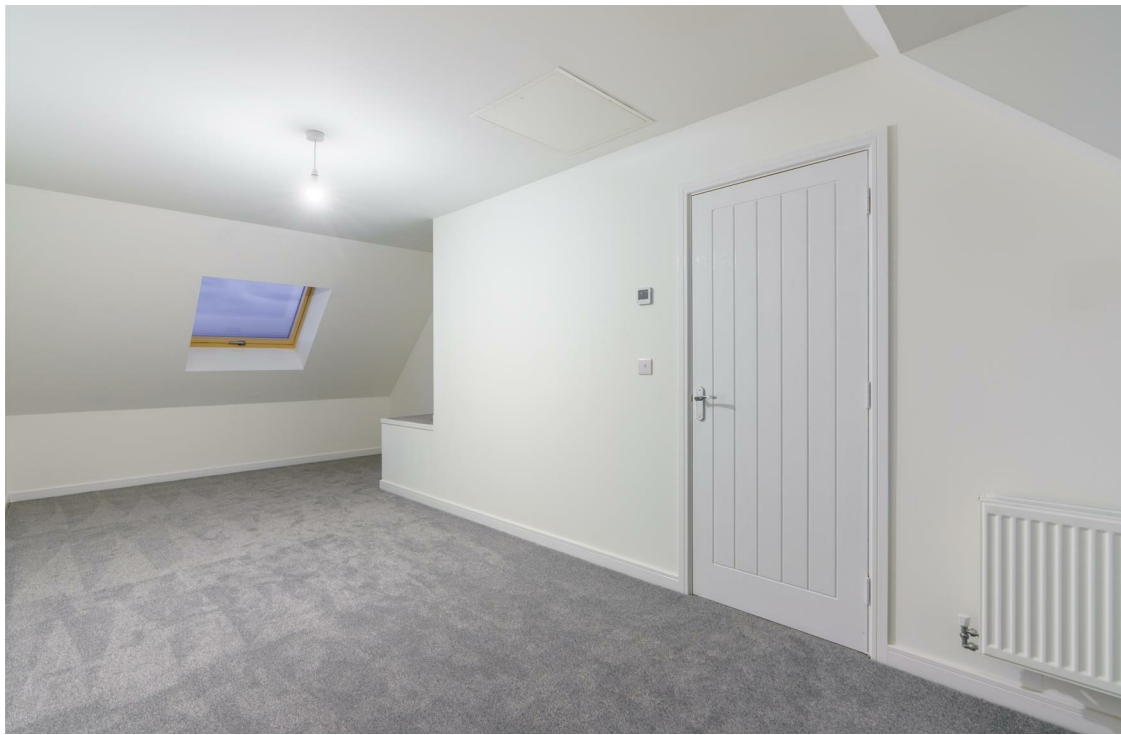
# BRUNTON

---

## RESIDENTIAL







# BRUNTON

---

## RESIDENTIAL





# BRUNTON

---

## RESIDENTIAL



**\*\*Brand New Home\*\* Available Now - Rent £1,200pcm - 3 Bedroom House - Semi Detached - Private Driveway - Generous Rear Garden - Over Three Floors - Upgraded Bathroom & Kitchen - Intergrated Appliances - Solar Panels - Call Now**



# BRUNTON

---

## RESIDENTIAL

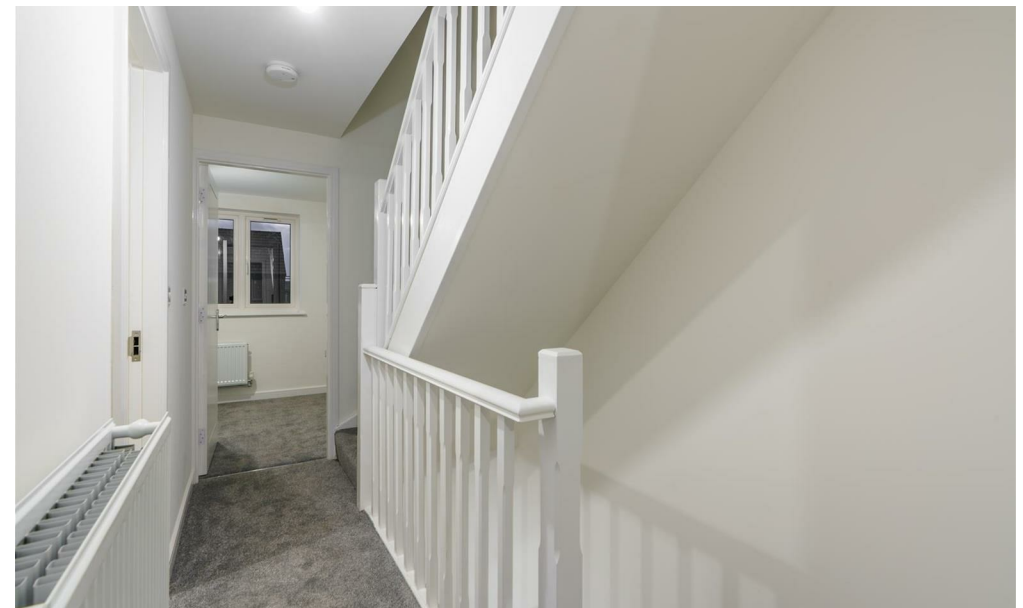




# BRUNTON

---

## RESIDENTIAL





# BRUNTON

---

## RESIDENTIAL

TENURE :

LOCAL AUTHORITY :

COUNCIL TAX BAND : New Build

EPC RATING : B

New Build



Energy Efficiency Rating		
	Current	Potential
Very energy efficient - lower running costs		
(92 plus) A		
(81-91) B		
(69-80) C		
(55-68) D		
(39-54) E		
(21-38) F		
(1-20) G		
Not energy efficient - higher running costs		
	89	89
EU Directive 2002/91/EC		
England & Wales		

Environmental Impact (CO <sub>2</sub> ) Rating		
	Current	Potential
Very environmentally friendly - lower CO <sub>2</sub> emissions		
(92 plus) A		
(81-91) B		
(69-80) C		
(55-68) D		
(39-54) E		
(21-38) F		
(1-20) G		
Not environmentally friendly - higher CO <sub>2</sub> emissions		
EU Directive 2002/91/EC		
England & Wales		